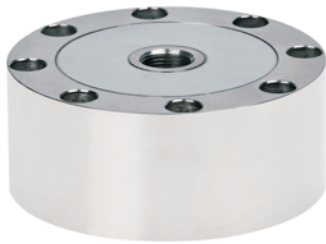


Model CP202

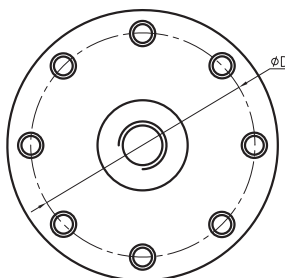
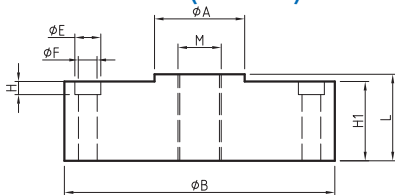


- Capacity: 2 t...90.8 t
- Material: alloy steel
- Protection class: IP67
- Application: truck scale, hopper scale and other weighing devices.

Performance Specifications

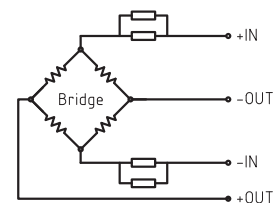
Parameter	Value	Units
Capacity	2, 5, 10, 25, 50, 90.8	t
Rated Sensitivity	2±0.04	mV/V
Accuracy Class	C2	
Combined Error	±0.03	%FS
Temp. Coeff - Zero	±0.030	%FS/10°C
Temp. Coeff - Span	±0.017	%FS/10°C
Creep(30min.)	±0.024	%FS
Zero Balance	2	%FS
Input Resistance	725±10	Ω
Output Resistance	700±7	Ω
Insulation Resistance	≥5000	MΩ@50Vdc
Operating Temperature Range	-20 to +55	°C
Compensated Temperature Range	-10 to +40	°C
Excitation Voltage	8 to 15	Vdc
Safe Overload	120	%FS
Ultimate Overload	150	%FS
Body Material	alloy steel	mm
Environment Protection	IP66	
Cable Specification	Ø5.7mm cable, L=8m	

Dimensions (in mm)



capacity(t)	A	L	H1	B	D	E	F	M	H
2-5t	34	46	32	106	88.9	14	9	M16x1.5	10.5
10-25t	41	53	47	122	101.7	14	9	M32x1.5	10.5
50t	51	57.6	51	143	117	17	10.5	M40x1.5	16
90.8t	76	83	70	200	162.6	20	13	M64x3	18

Electrical Connection



Ordering Information

Model	Capacity	Sensitivity	Combined Error	Electrical interface	Customized Spec's
CP202	50t	2.0mV/V	0.03%FS	Ø5.7mm cable, L=8m	